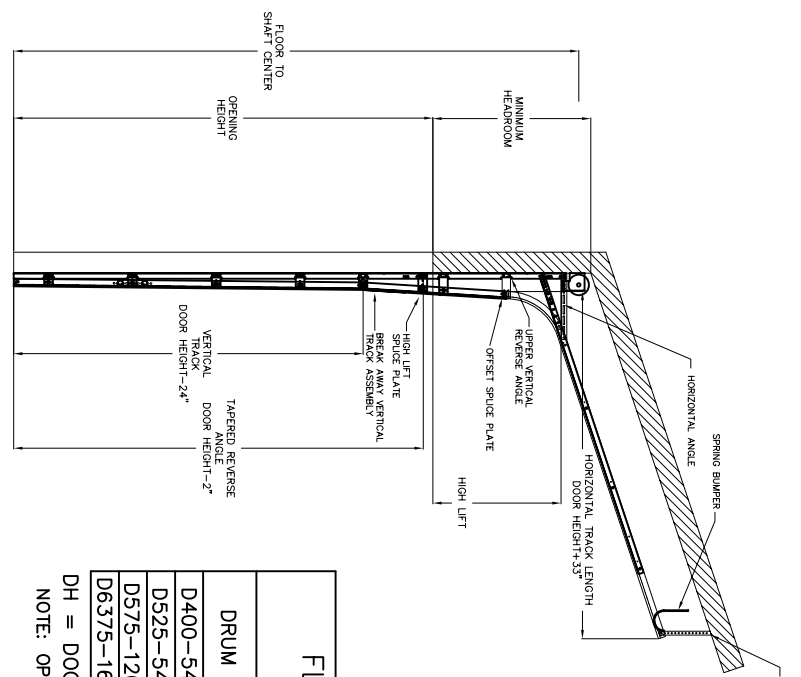
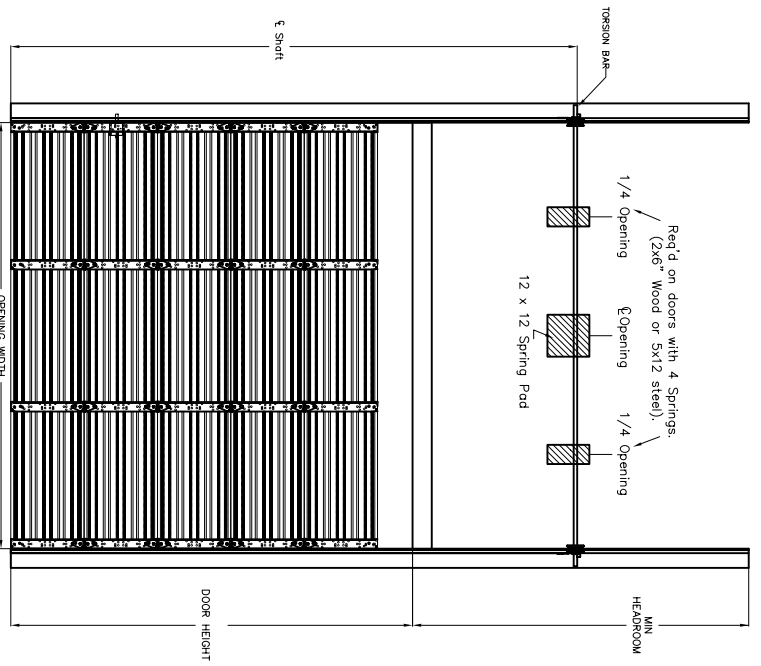


# Sectional Door – High Lift – Follow the Roof Track – Dimensional Clearances

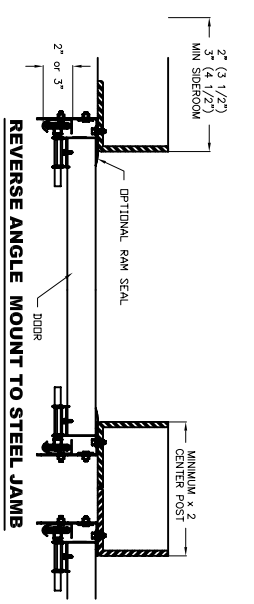
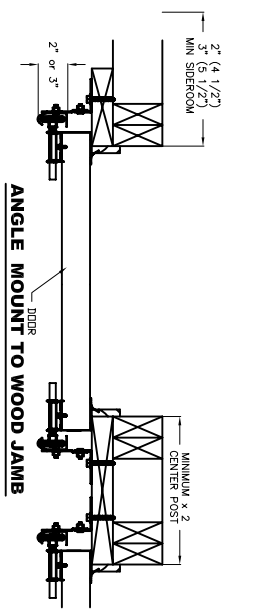
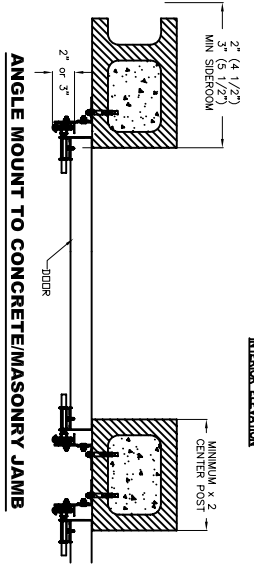


HEADROOM REQUIREMENTS	
DOOR HEIGHT	MINIMUM HEADROOM
7' - 12'	15"
13' - 18'	16"
19' - 20'	19"

\* ADD 4" FOR OPERATOR.

FLOOR TO SHAFT CENTER REQUIREMENTS		
DRUM	HIGH LIFT	MINIMUM HEADROOM
D400-54	9" - 54"	DH + HL + 6"
D525-54	9" - 54"	DH + HL + 7"
D575-120	9" - 120"	DH + HL + 8"
D6375-164	9" - 164"	DH + HL + 8"

DH = DOOR HEIGHT HL = HIGH LIFT  
NOTE: OPERATOR REQUIRES 24" SIDEROOM ON ONE SIDE



DOOR #	QTY	OPENING SIZE	DOOR SIZE	HEAD ROOM	HIGH LIFT	ROOF PITCH	JAMB MATERIAL	TRACK SIZE	MOUNTING TYPE	SHAFT TYPE	SEAL TYPE	OPERATION
1001 West Hartford * Ponce City, OK 74601 Phone: 800-364-3667 * Fax: 800-324-7018												
Project:												
Contractor:												
Architect:												
Distributor:												
Date:												